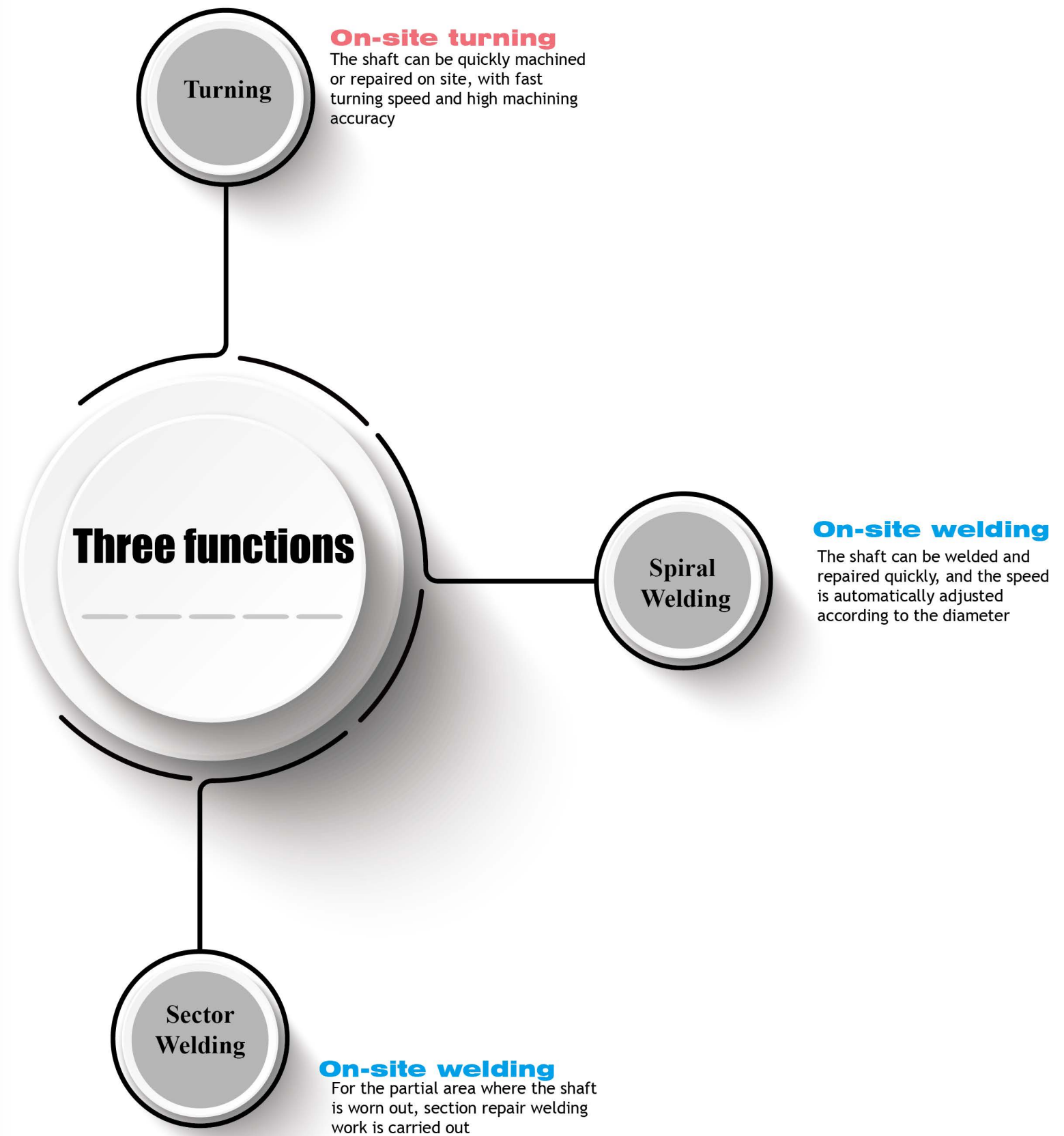
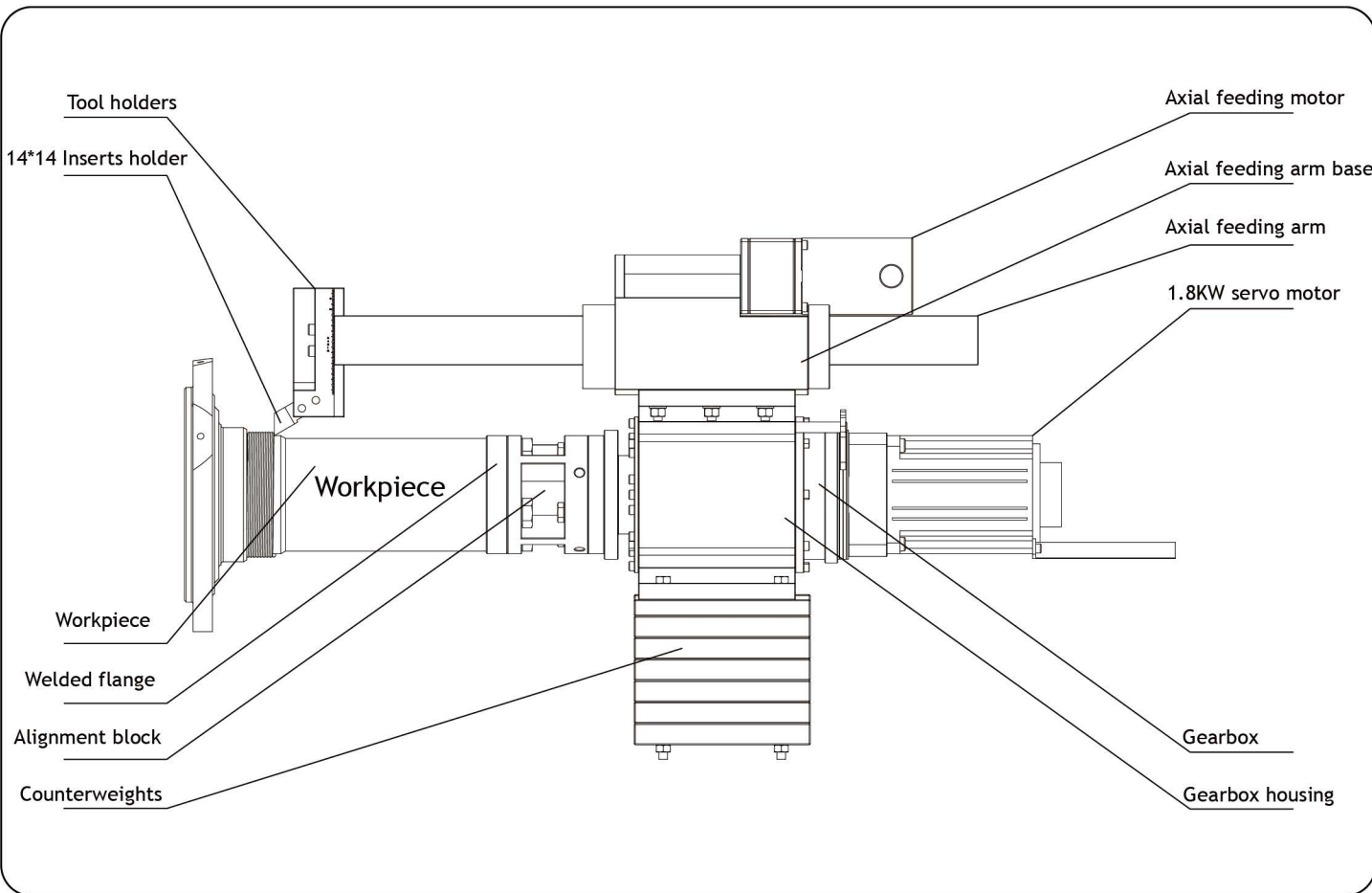


P230 Portable Lathe





- Tool holders



- 14*14 Inserts holder



- Workpiece



- Welded flange



- Alignment block



- Counterweights



- Axial feeding motor



- Axial feeding arm base



- Axial feeding arm



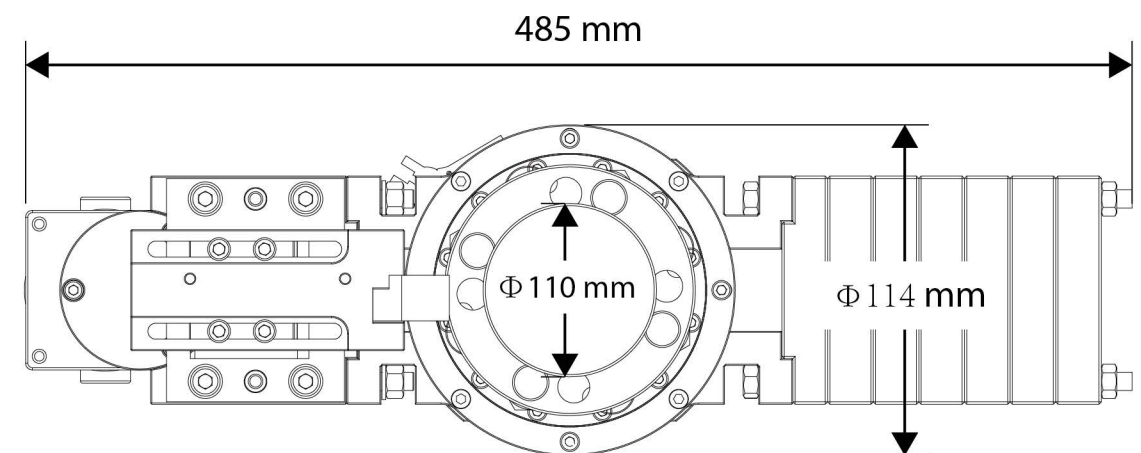
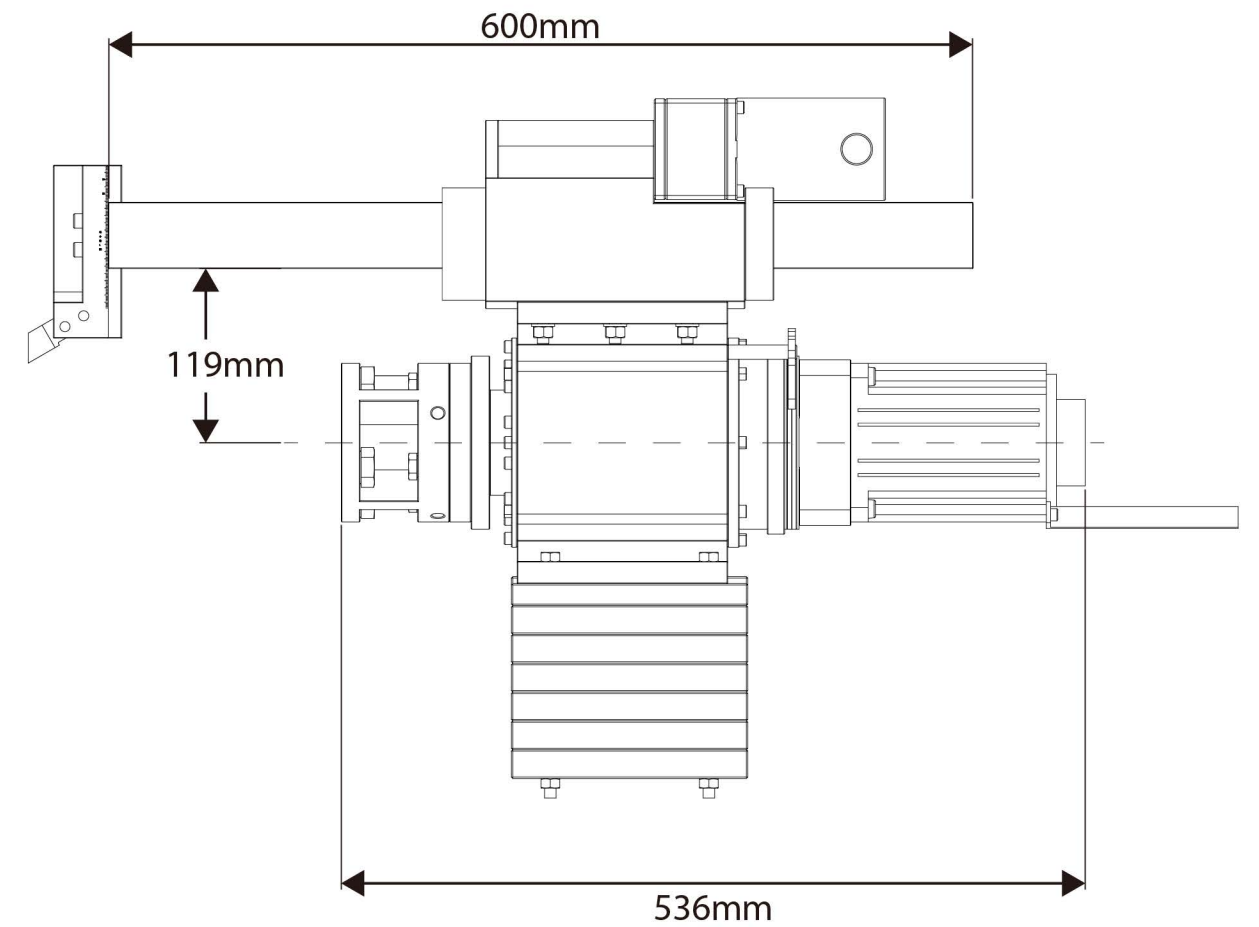
- 1.8KW servo motor



- Gearbox



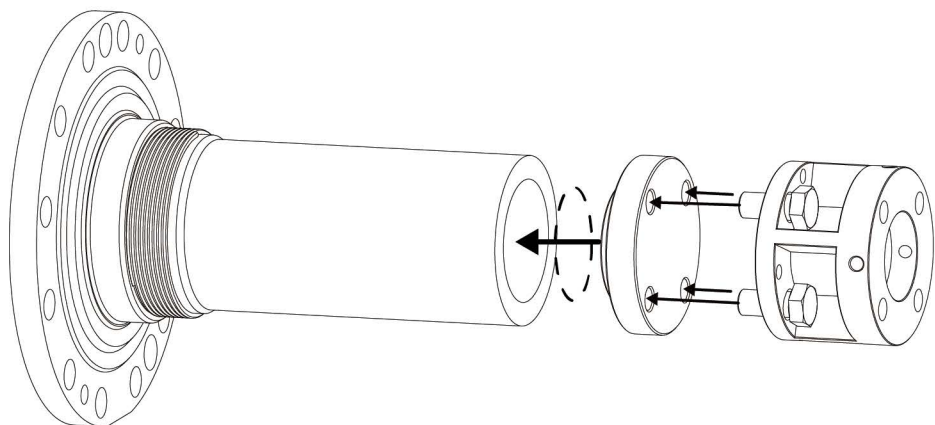
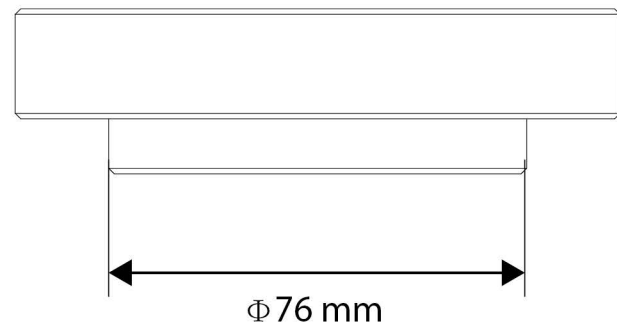
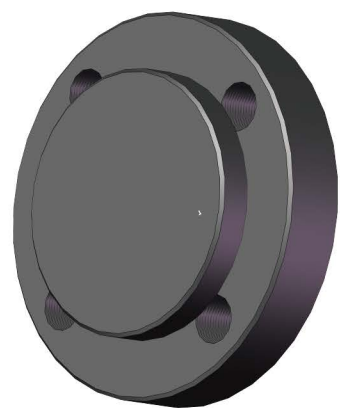
- Gearbox housing



Dimension and weight



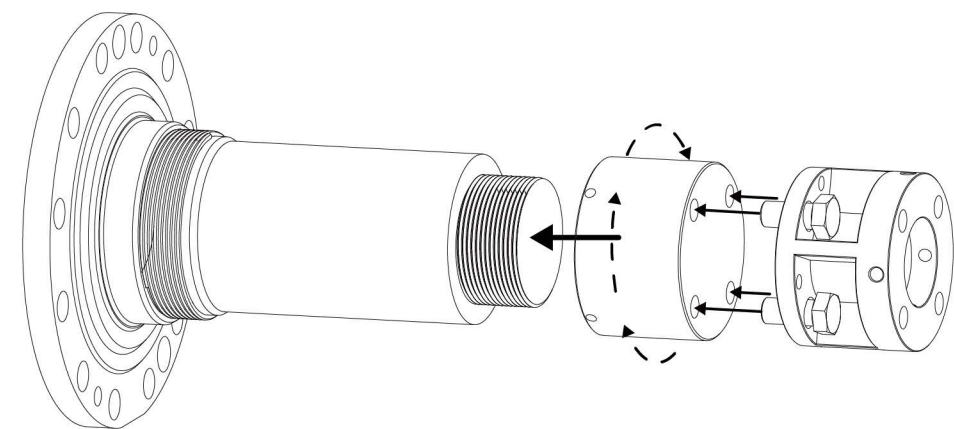
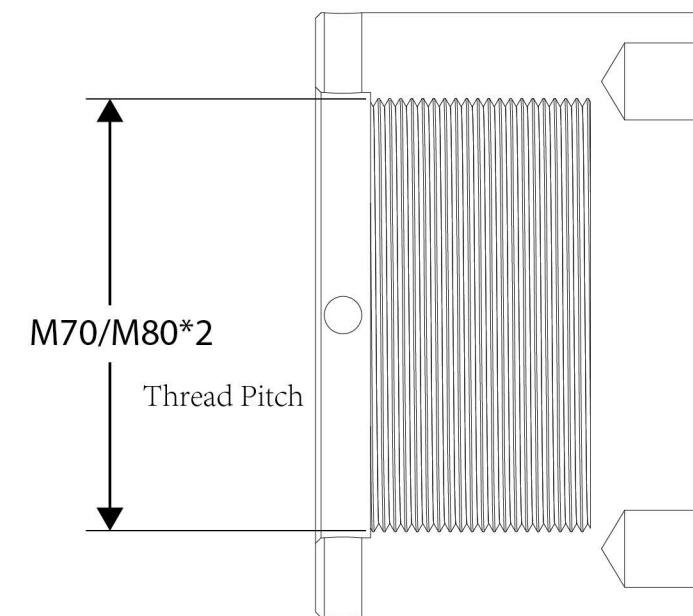
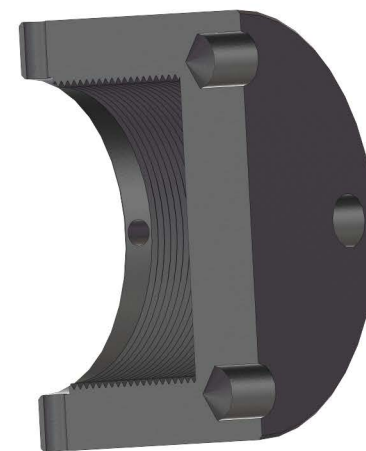
- Weight: 44KG



Welded type connection flange



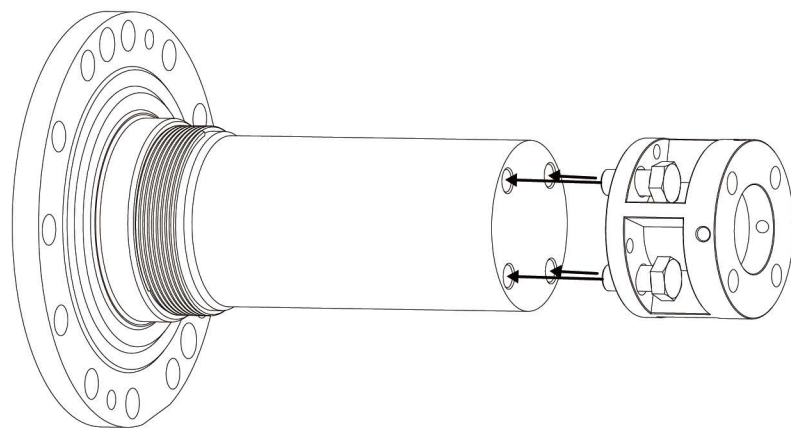
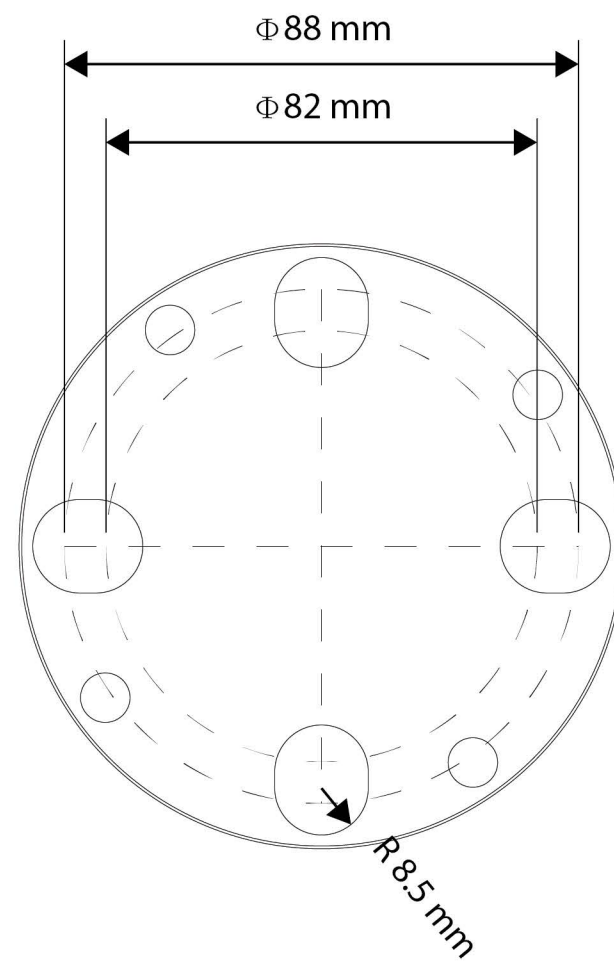
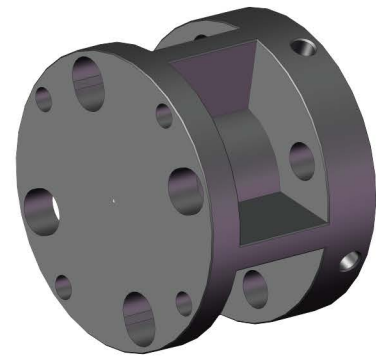
- Weld the flange to the workpiece, use the screws to connect with the alignment block .



Thread type connection flange (Optional)



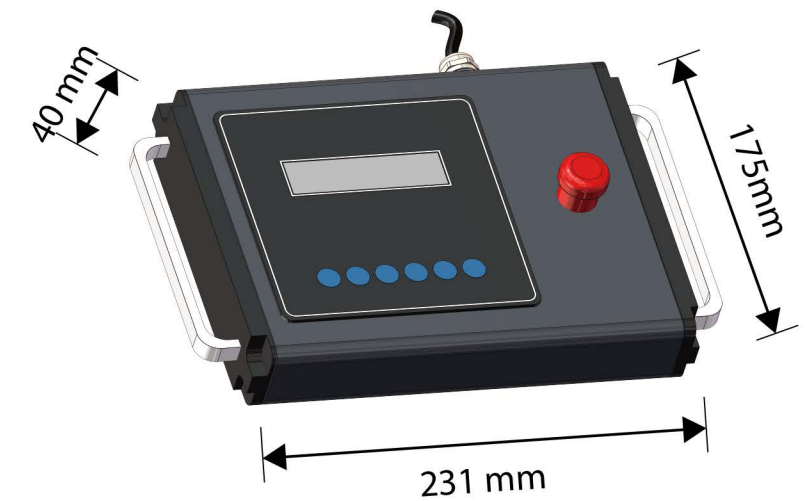
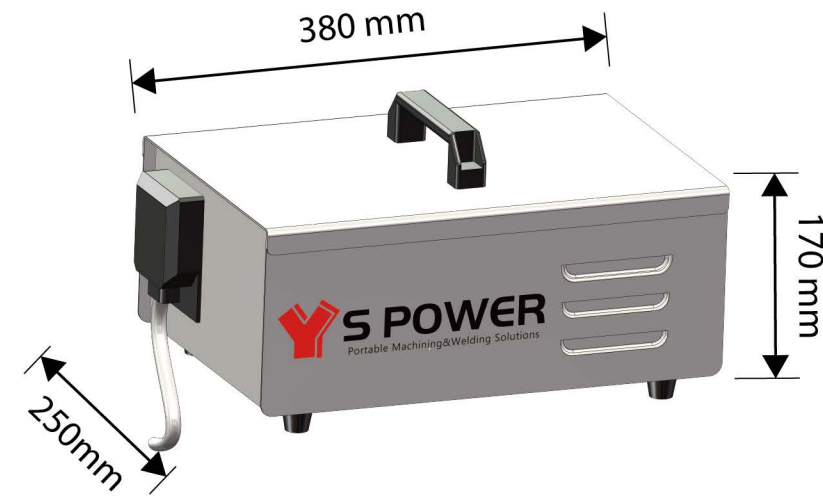
- Qty of the thread type connection flanges (M70*2) 1pc, (M80*2) 1pc



The alignment block connection



- The alignment block is directly connected with the workpiece, can use screws(M16) to tighten the flange threaded hole in 82-88mm flange diameter.



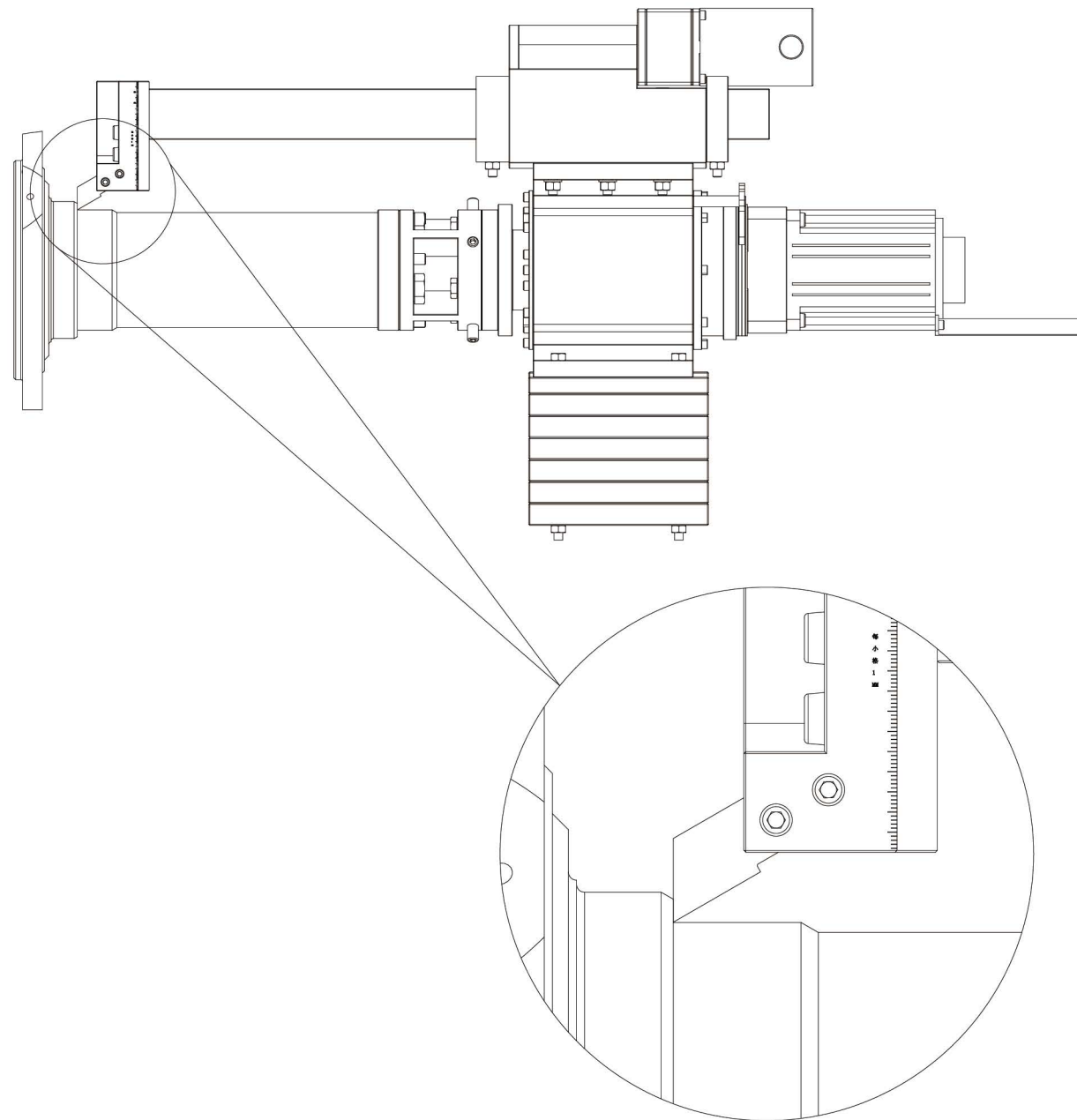
Control box and control panel



- Voltage: 220V-240V

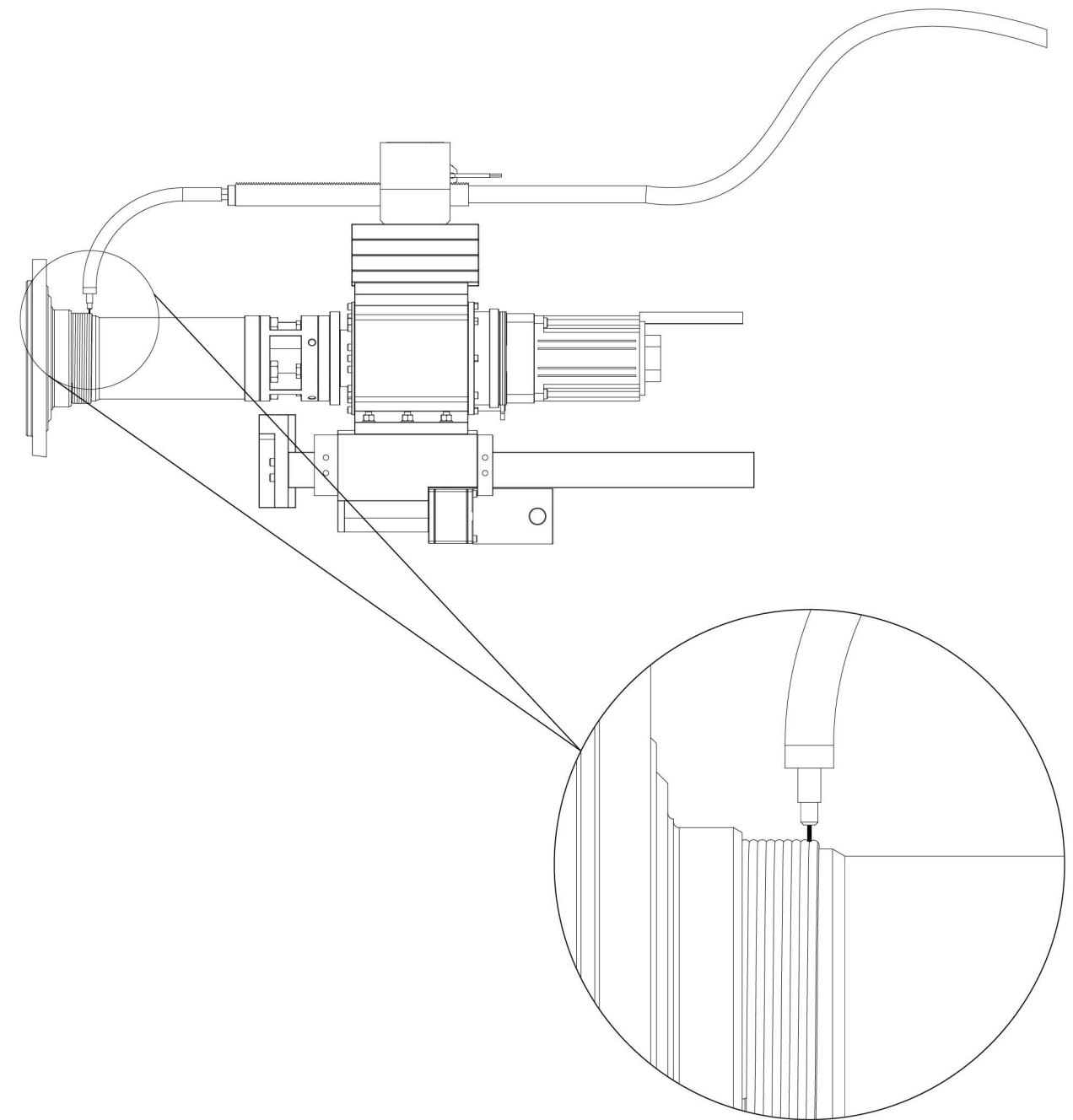


- Hertz range: 50Hz-60Hz



Shaft turning

- Axial feeding length: < 300mm
- Shaft diameter MAX: $\Phi 230\text{mm}$
- Shaft diameter MIN: $\Phi 60\text{mm}$



Shaft welding

- Diameter range: 60-230mm
- Axial feeding length: < 300mm



- Products name: Portable Lathe
- Model: P230
- Voltage: 220V ~240V
- Currency: 9.5A
- Hertz range: 50-60Hz
- Rated output power of main motor: 1.8KW Servo Motor
- Torque: 52N.m
- Servo motor IP rating: IP67
- RPM: 0-150RPM
- Lathe feeding motor: 150W Brush motor
- Weld feeding motor: 150W Stepper motor
- Axial feeding length: <300mm
- Working range: 60-230mm



YS POWER
Portable Machining&Welding Solutions



YS POWER
Portable Machining&Welding Solutions